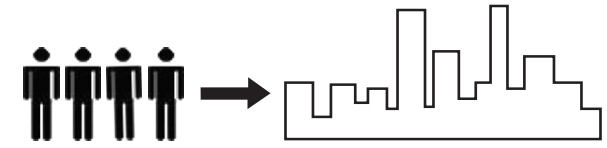


URBANIZATION IN INDIA

Hubs of Industrialization



In pre-industrial India, the key urbanizing elements were administration, defence, trade, and religion. Independence brought marked improvement in the country's economy.

After the industrial revolution and with the advances in technology, the process of urbanization has undergone a series of sequential changes, including metropolitanization, suburbanization, the rise of new towns, and the revival of the central city.

The industrial urbanization in India is shaped by 5 large metropolitan centers: Kolkata, Mumbai, Delhi, Bangalore and Chennai.

The urban system has become distorted because of a significant clustering of large-sized settlements in pockets of development and the disproportionate distributions of these settlements.

Urbanization in India is described as having certain peculiar features: an uneven distribution of urban centers among the regions and there has been an over-urbanization in the largest cities, which has created a chronic housing problem.

A large number of migrants are living in slums that lack basic amenities.



NEW DELHI India 11.954.217 INHABITANTS

“National Capital“

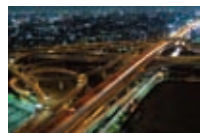
Prod. Income **\$ 96 billion**
 Aver. Annual Growth = 2.18%
 Key Sectors Politics
 Trade
 Services



MUMBAI Maharashtra 13.662.885 INHABITANTS

“Financial Capital“

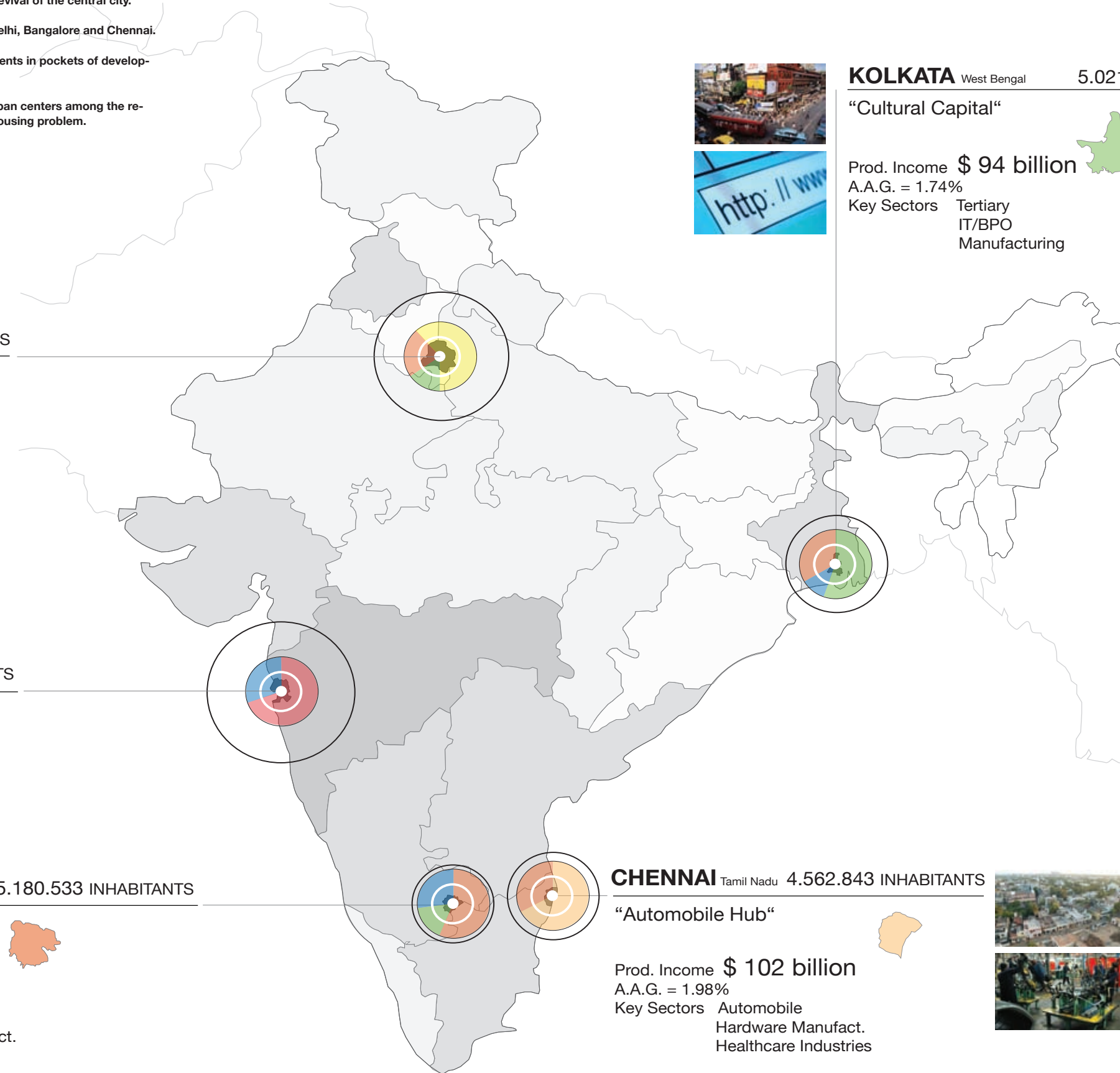
Prod. Income **\$ 128 billion**
 A.A.G. = 2.32%
 Key Sectors Trade
 Finance
 Film Industry



BANGALORE Karnataka 5.180.533 INHABITANTS

“IT Hub“

Prod. Income **\$ 94 billion**
 A.A.G. = 2%
 Key Sectors Electronics
 Software Manufact.
 Chemical



KOLKATA West Bengal 5.021.458 INHABITANTS

“Cultural Capital“

Prod. Income **\$ 94 billion**
 A.A.G. = 1.74%
 Key Sectors Tertiary
 IT/BPO
 Manufacturing



SECTORS

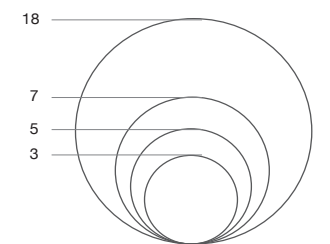
- Finance
- Infor. Tech. (IT)
- Automobile
- Politics
- Tertiary
- Industry



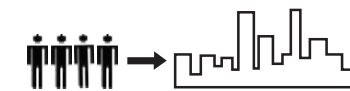
URBANISATION RATE

- 35 < 45 %
- 25 < 35 %
- 15 < 25 %
- < 15 %

POPULATION (millions)



URBANIZATION IN INDIA



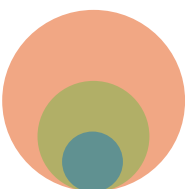
SECTORS \$\$

- Finance
- Infor. Tech. (IT)
- Auto
- Politics
- Tertiary
- Industry

METROPOLITAN AREAS POPULATION

- Mumbai
- Delhi
- Bangalore
- Kolkata
- Chennai

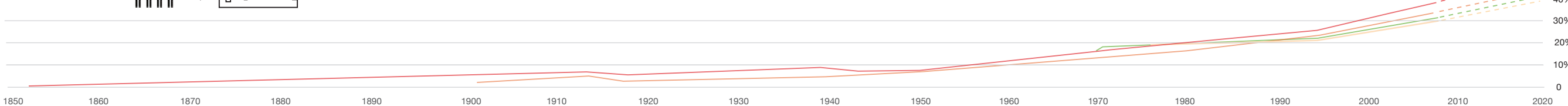
SECTORS GROWTH



URBANISATION



Urbanisation's State Percentage absorbed by the Metropolitan Areas



KOLKATA

KOLKATA

- 1855: First Jute Mill
- 1867: Paper Industry
- 1875: Large Scale Chemical Industry
- 1890: Industrialization shift outside Calcutta's Edges
- 1905: Howrah Station
- 1912: Delhi becomes colonial Capital
- 1915-1918: I World War
- 1937: Howrah Bridge
- 1947: Independence
- 1971: Bangladesh War
- 1971: Refugees Wave
- 1980: Jute Sector collapses
- 1991: Economic Liberalisation
- 1995: IT Sector Boom
- 2005: Salt Lake City Sector



DELHI

DELHI

- 1912: Colonial Capital
- 1921: India Gate
- 1947: Indian Capital
- 1950-70: Politic Government increases services demand
- 2006: Government decides to ban Coke in some States in order to promote Indian Cola



MUMBAI

MUMBAI

- 1855: First Cotton Mill
- 1875: Bombay Stock Exchange (BSE)
- 1898: Churchgate Station
- 1913: First silent feature Film
- 1958: Bollywood releases first color Films
- 2000: Bollywood Boom
- 2006: BSE in the top 3 World Rank



BANGALORE

BANGALORE

- 1909: Foundation of the Indian Institute of Sciences
- 1972: Indian Space Research Organization (ISRO)
- 1976: Karnataka State Electronics Develop. Corporation (KEONICS)
- 1976: Industry growth through Government initiatives BHEL - BEML - ITI - NAL
- 1976: Emerging as a global centre for High-Tech research and production
- 1985: Software Technological Park (STP) of India
- 1985: Relationship with Multinational Companies
- 1990: Electronic City
- 1997: International Technology Park Bangalore (ITPB)



CHENNAI

CHENNAI

- 1885: Manufacturing Industry
- 1898: Madras Central Station
- 1950: Heavy Vehicles Factory
- 1960: Ashok Leyland Truck Factory
- 1960: Small Industries Development Corporation (SIDCO)
- 1960: Madras Refinery Madras Fertilisers
- 1985: Software Technological Park (STP) of India
- 1985: Tamil Nadu Industries Development Corporation (TIDCO)
- 1990: Tidel Park Chennai
- 1990: Mahindra Industrial Park
- 2000: Mahindra Industrial Park
- 2000: Major export hub for Car Manufactures
- 2000: Second largest Software exporter of the nation